

Mortality and epidemic disease in
Cheapside and Clerkenwell, 1538 to 1665

Gill Newton

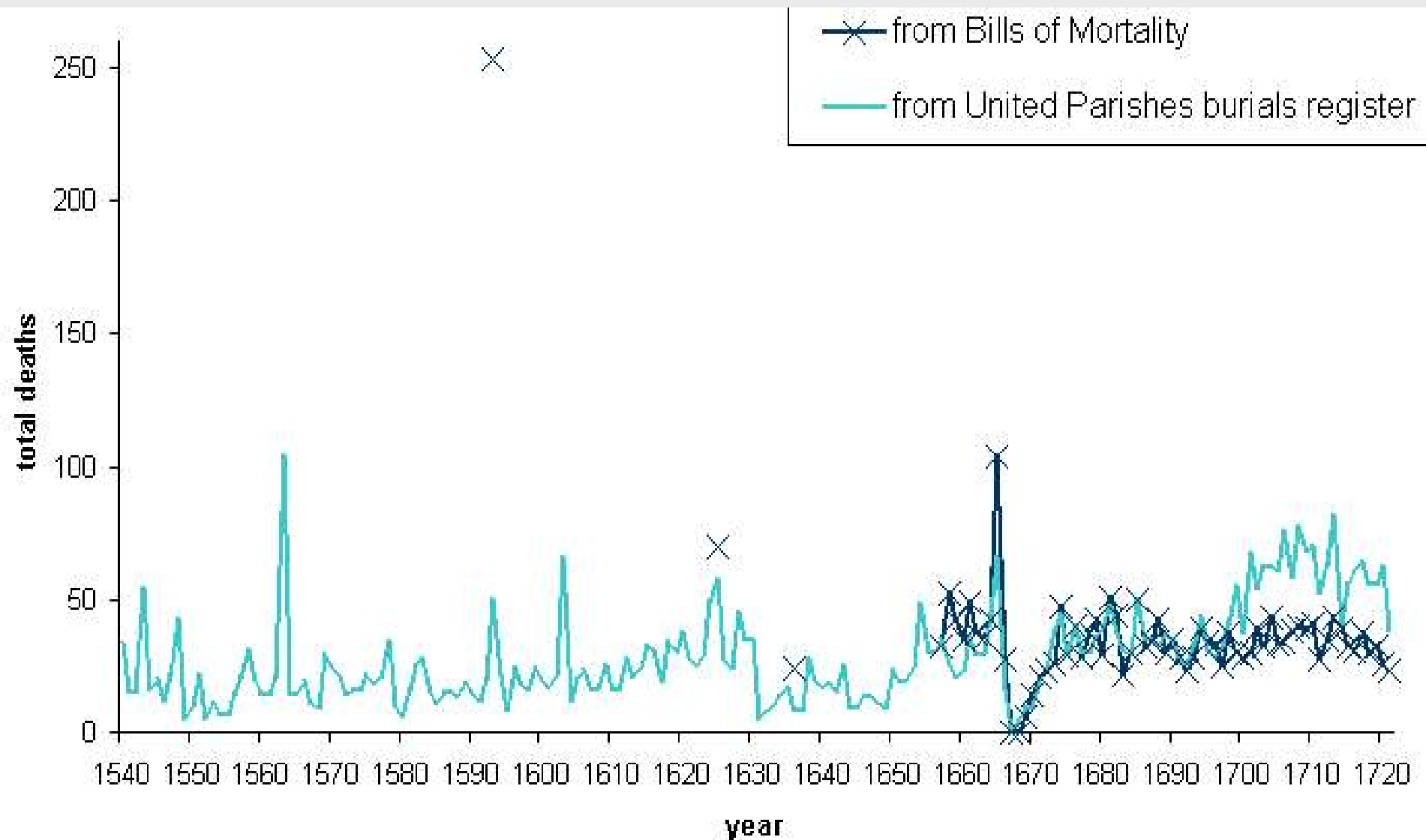
Cambridge Group for the History of Population
and Social Structure

Bills of mortality series: caveats

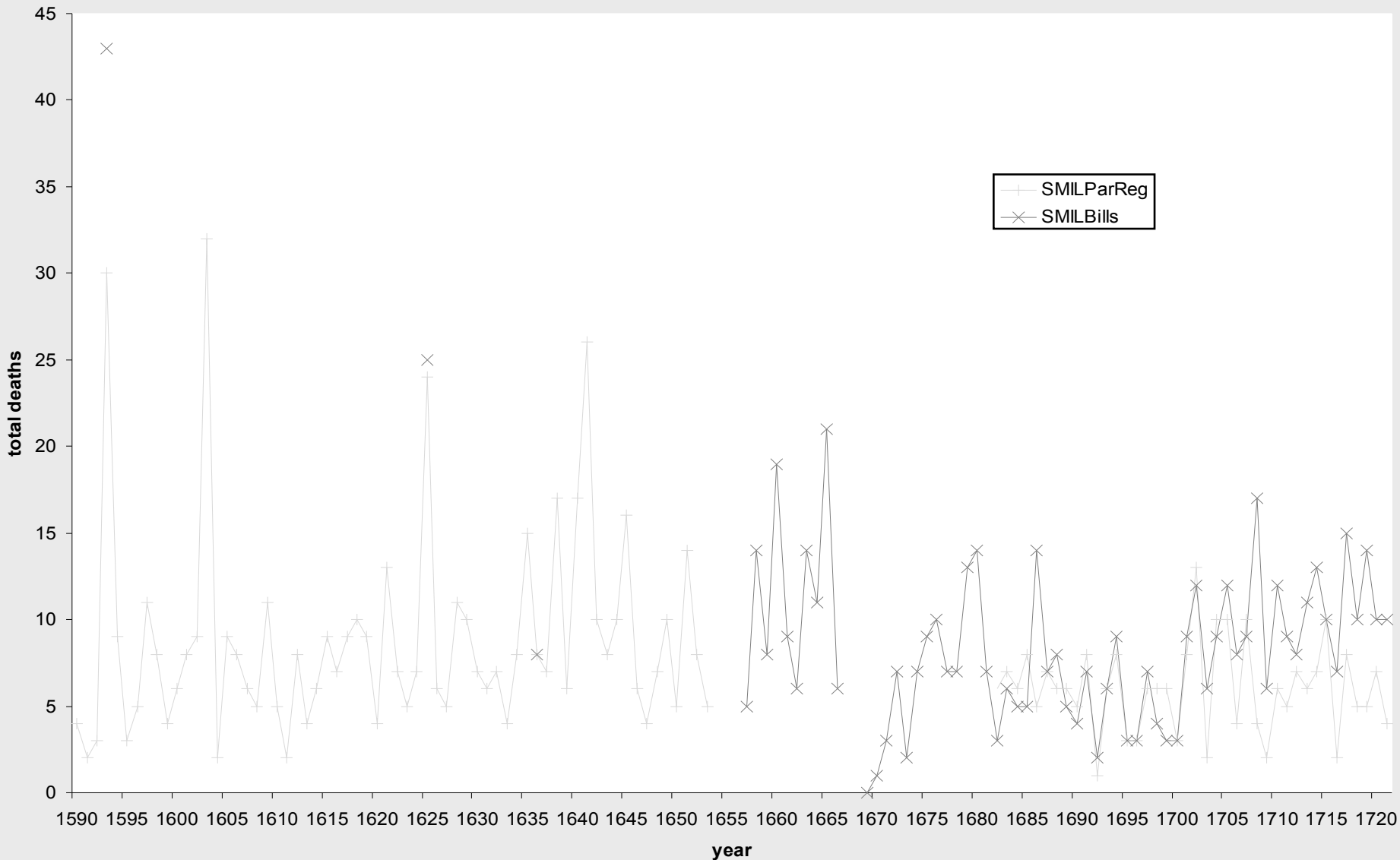
- Notoriously defective
 - Not independent in origin from the parish register
 - Annual series not continuous until 1658
- why bother? To fill in some gaps...

Bills of mortality deaths compared to parish register burials:

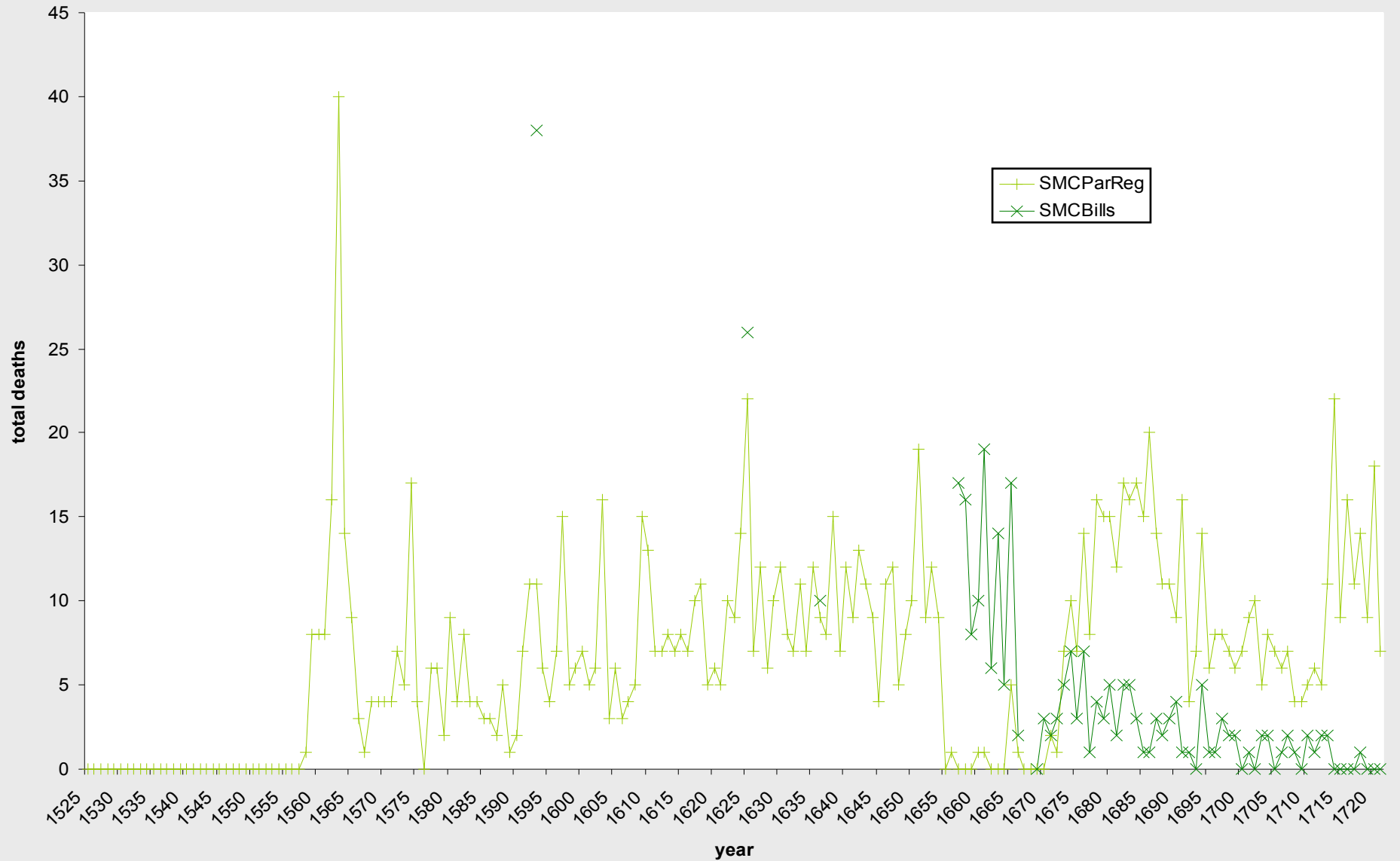
St Mary le Bow, All Hallows Honey Lane, St Pancras Soper Lane



Bills of mortality deaths compared to parish register burials: St Martin Ironmonger Lane

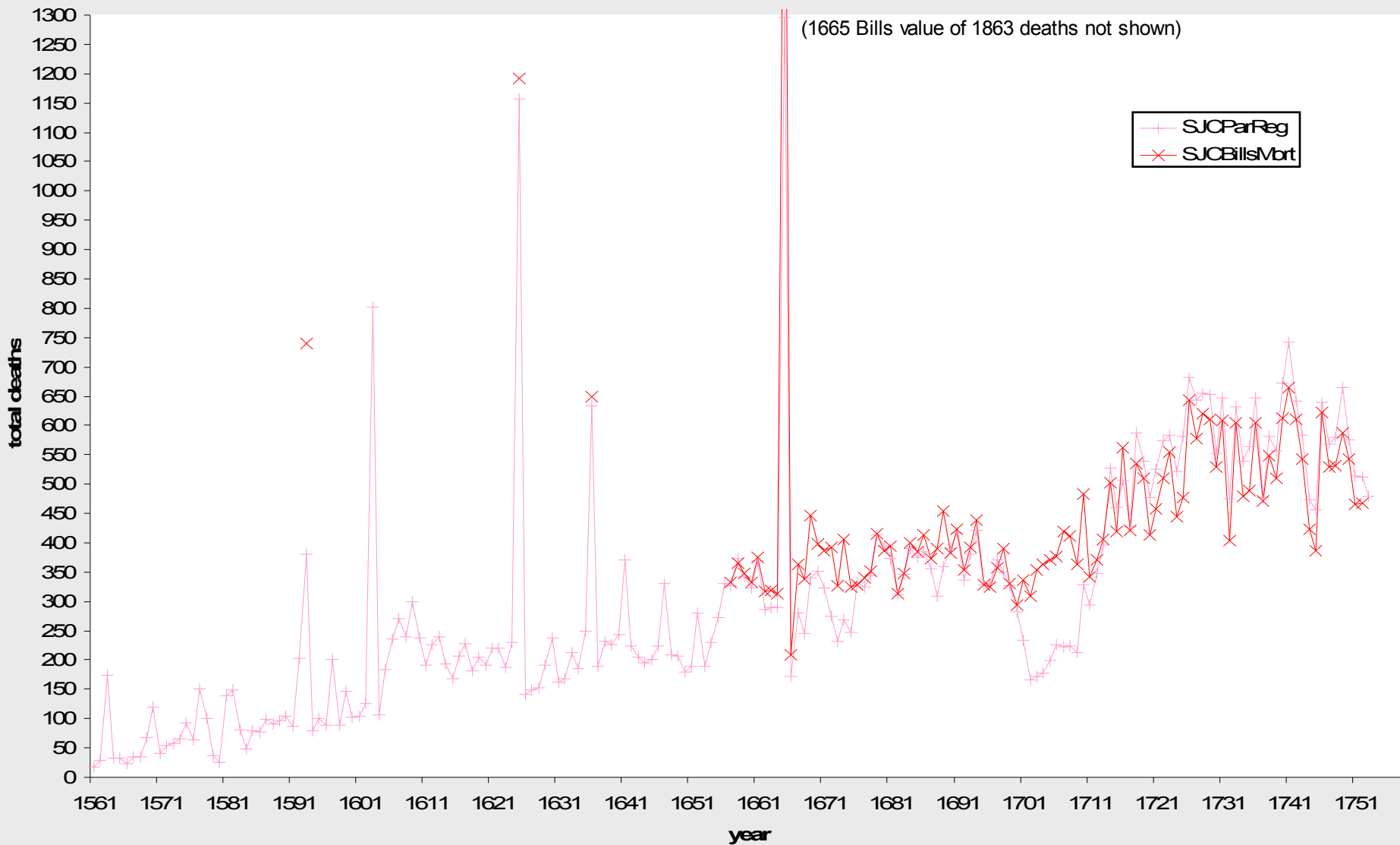


Bills of mortality deaths compared to parish register burials: St Mary Colechurch

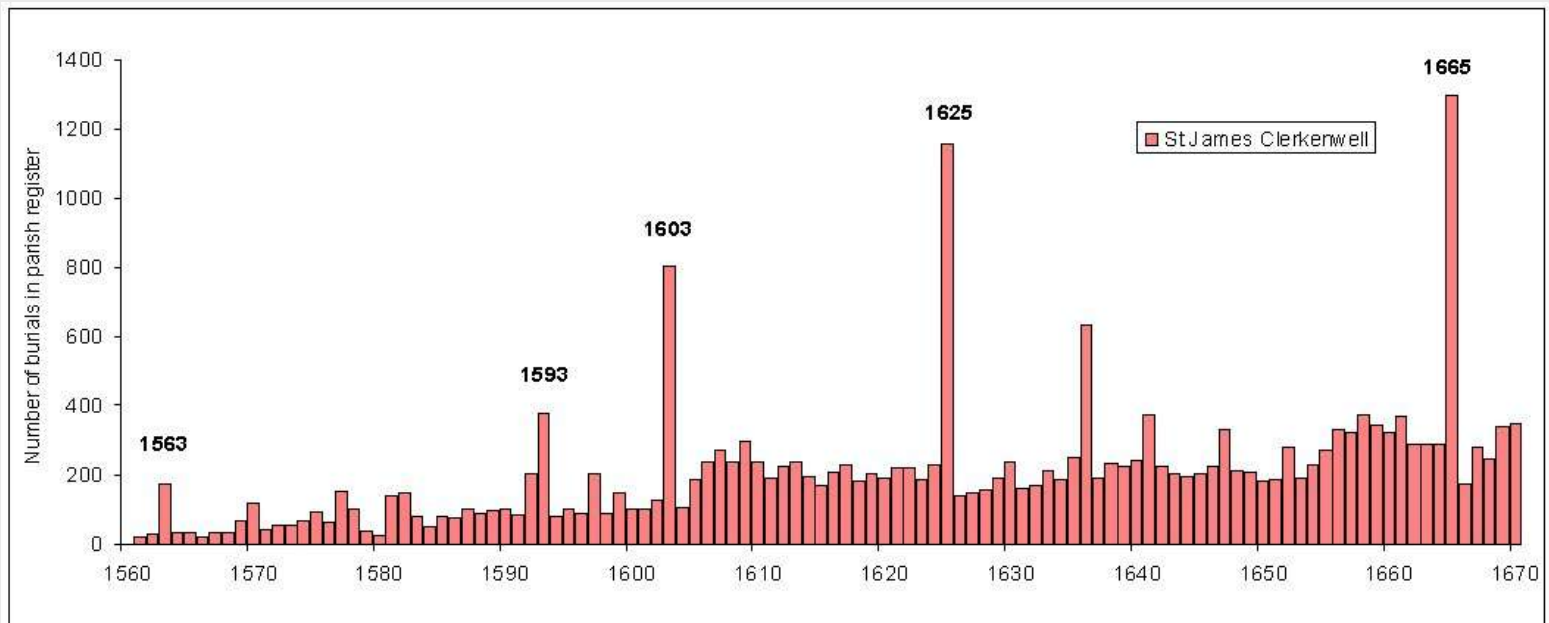
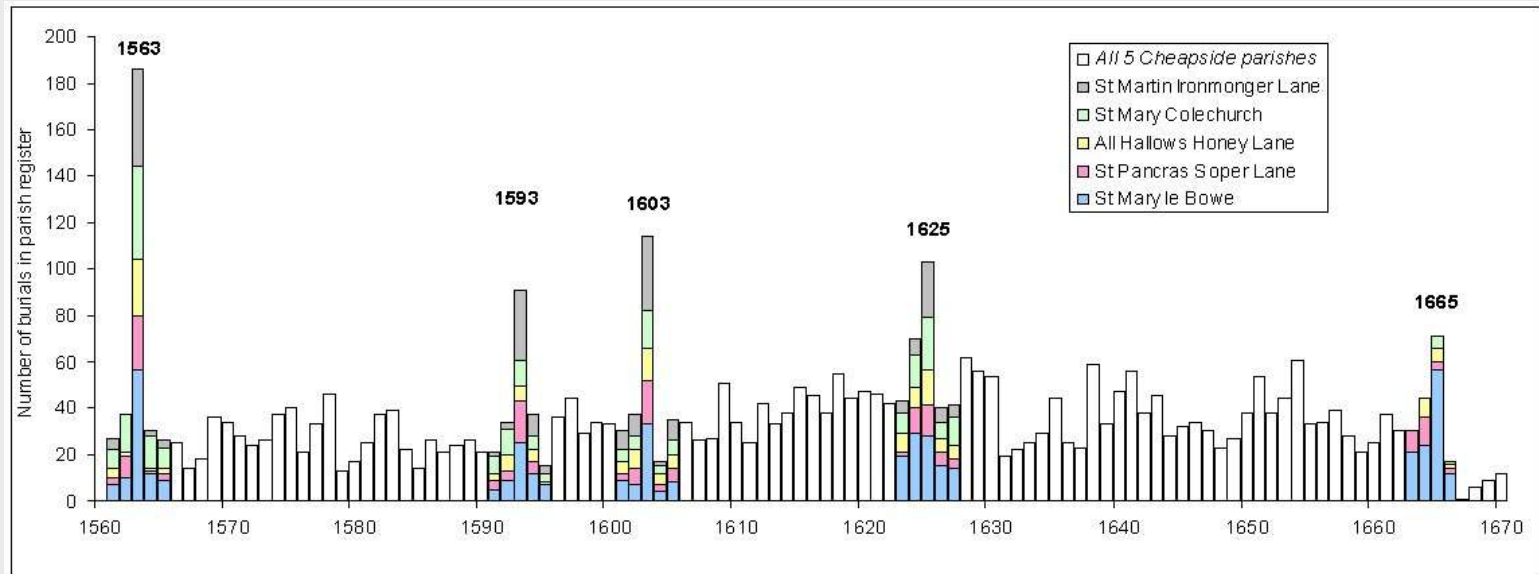


Bills of mortality deaths compared to parish register burials:

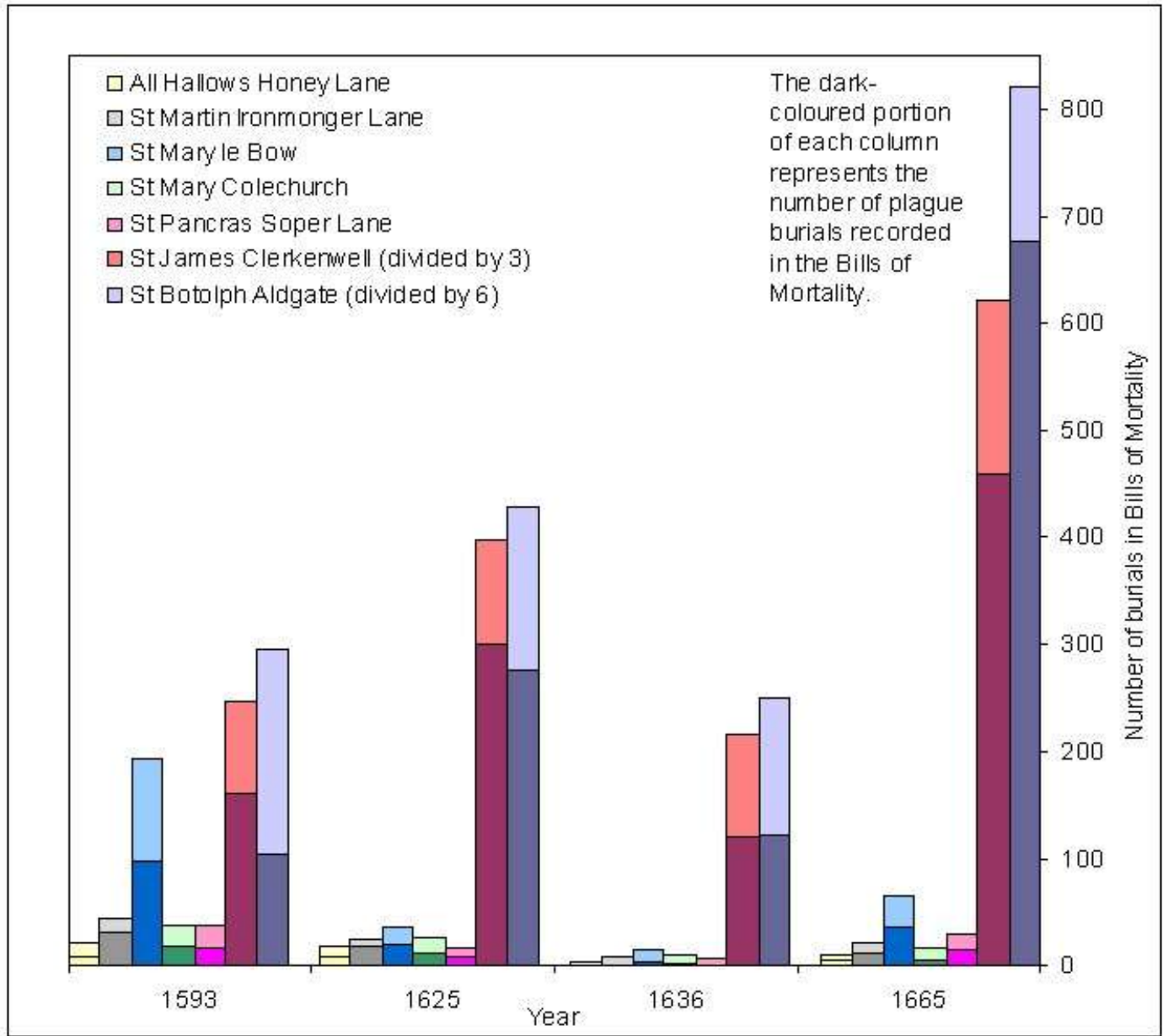
St James Clerkenwell



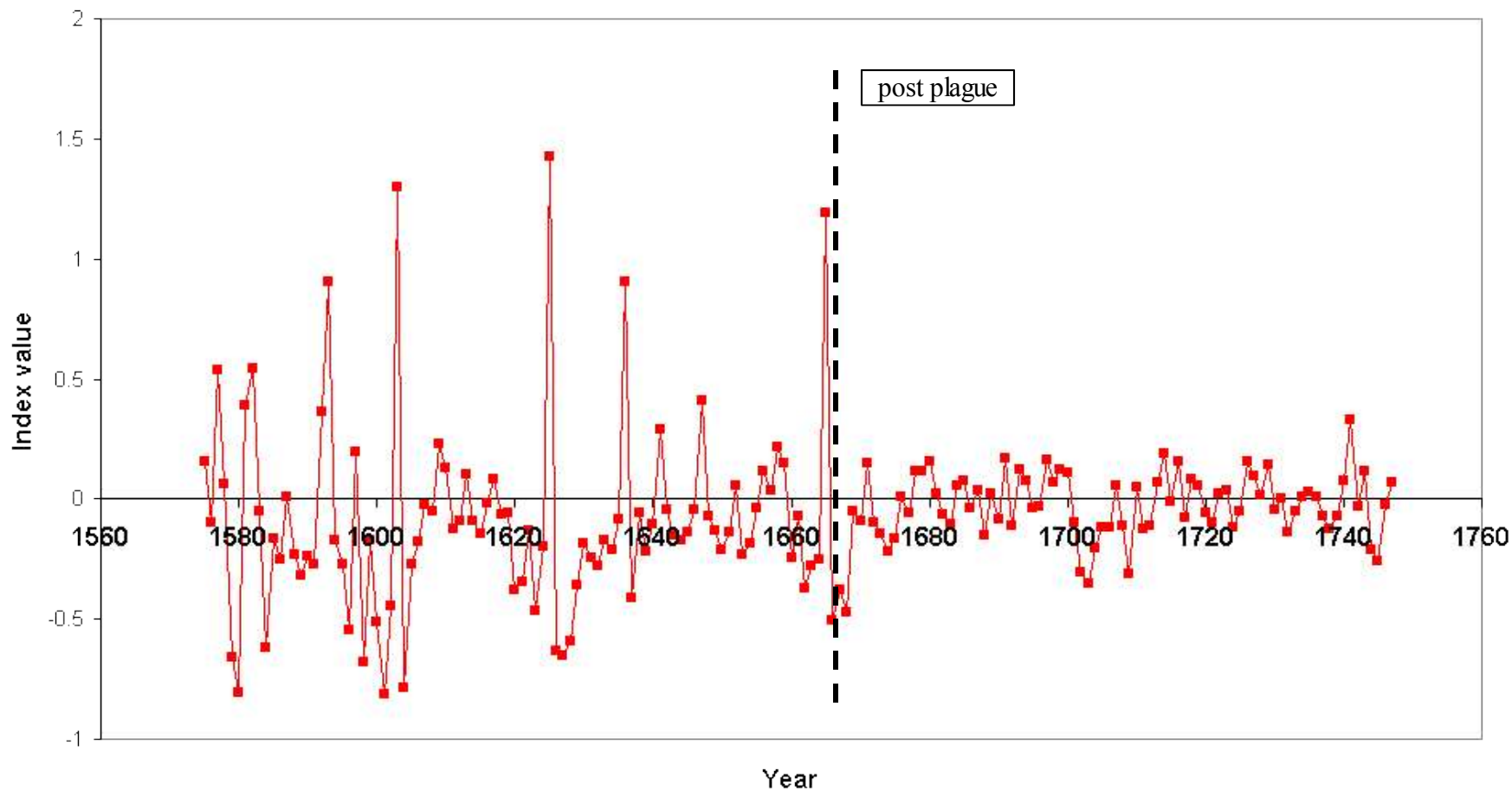
Burials per year from parish registers with plague years highlighted



Plague and other burials from the Bills of Mortality: selected years of epidemic mortality in Cheapside parishes and Clerkenwell



Detrended burials per year in Clerkenwell, before and after plague



Source: Clerkenwell burial register

Plague years in Cheapside and Clerkenwell: months with excess mortality from the parish registers

month	1593		1603		1625		1665	
	Clerkenwell	Cheapside	Clerkenwell	Cheapside	Clerkenwell	Cheapside	Clerkenwell	Cheapside
Jan								
Feb								
Mar								
Apr	X							
May	X						X	
Jun	X				X		X	
Jul	X		X	X	X		X	
Aug	X	X	X	X	X	X	X	X
Sep	X	X	X	X	X	X	X	X
Oct	X	X	X	X	X	X	X	X
Nov	X	X		X				
Dec	X	X						